

DESCRIPTION

AMC MODEL MSN-8DR-05-STANDARD OPTION 3M6553M755, HPR10W IS A REFLECTIVE SP8T PIN DIODE SWITCH DESIGNED TO MEET THE 3,655 TO 3,775 MHz FREQUENCY RANGE WITH A 10 WATT POWER HANDLING.

SPECIFICATIONS

- FREQUENCY RANGE: 3,655 MHz TO 3,775 MHz
- INSERTION LOSS: <2.5 dB
- ISOLATION: >60 dB MINIMUM
- VSWR: 1.3:1 MAXIMUM
- MAXIMUM INPUT POWER: 40 dBm
- PEAK POWER: 46 dBm
- P1dB OUTPUT: >46 dBm
- SWITCHING TIME: <2 uSEC
- MULTI PORT: 8 PORT
- POWER CONSUMPTION: +5V(500 mA) & -27V(<10 mA)
- CONTROL: TTL (HIGH: I/L, LOW: ISOLATION)
- ADDITIONAL FUNCTION: WITH ALL PORT OFF FUNCTION IF NECESSARY
- INTERFACE
 - RF: SMA FEMALE
 - POWER & CONTROL: MOLEX 48153
- SIZE: 140 X 70 X 21 (W X H X D)
- WEIGHT: 1.5 OUNCE TYPICAL

OPTIONS:

- 3M6553M755: OPTIMIZED FOR 3,655 TO 3,775 MHz FREQUENCY RANGE
- HPR10W: 10 WATTS POWER HANDLING

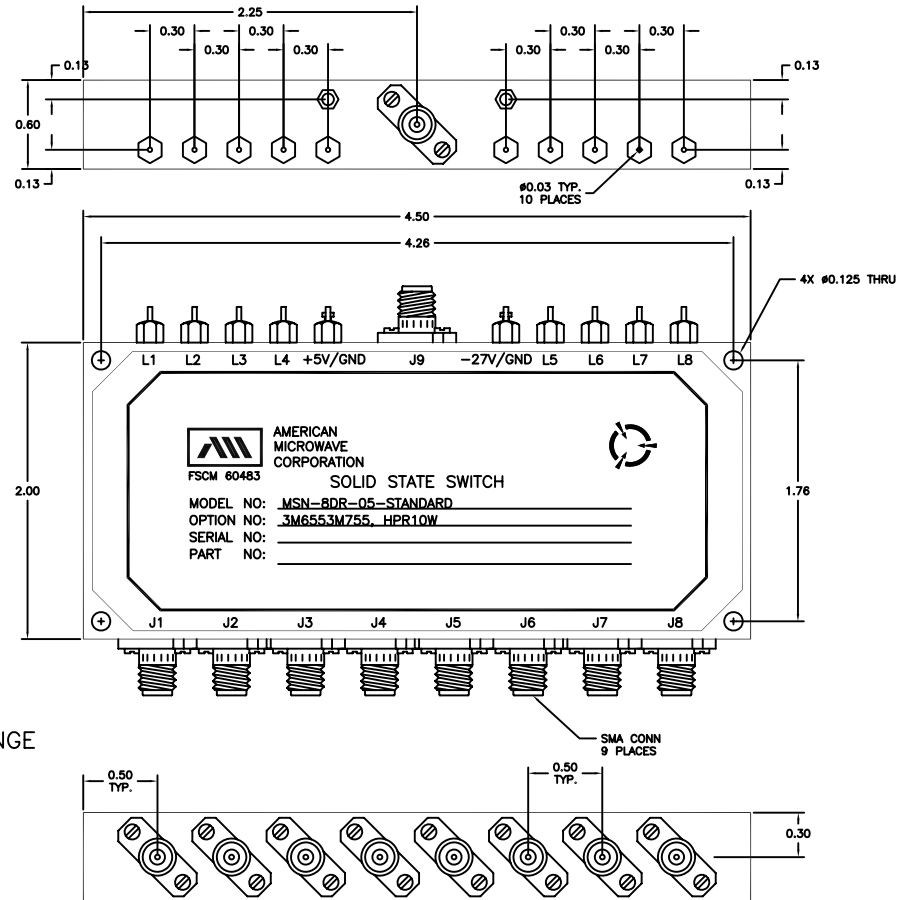
ENVIRONMENTAL RATINGS:

- TEMPERATURE: -20°C TO +60°C (OPERATING)
 -65°C TO +125°C (STORAGE)
- HUMIDITY: MIL-STD-202F, METHOD 103B COND. B
- SHOCK: MIL-STD-202F, METHOD 213B COND. B
- VIBRATION: MIL-STD-202F, METHOD 204D COND. B
- ALTITUDE: MIL-STD-202F, METHOD 105C COND. B
- TEMPERATURE CYCLE: MIL-STD-202F, METHOD 107D COND. A

NOTE: SPECIFICATIONS WILL VARY OVER OPERATING TEMPERATURE
 NOTE: THE ABOVE SPECIFICATIONS ARE SUBJECT TO CHANGE OR REVISION

ALL DIMENSIONS ARE IN INCHES
 TOLERANCES:
 X.XX ±0.020
 X.XXX ±0.010

REVISIONS				
ZONE	REV.	DESCRIPTION	DATE	APPROVED
	-	SEE ECR 07-066	05/03/07	
	A	ECN# 07-105	8/19/07	



AMERICAN MICROWAVE CORPORATION

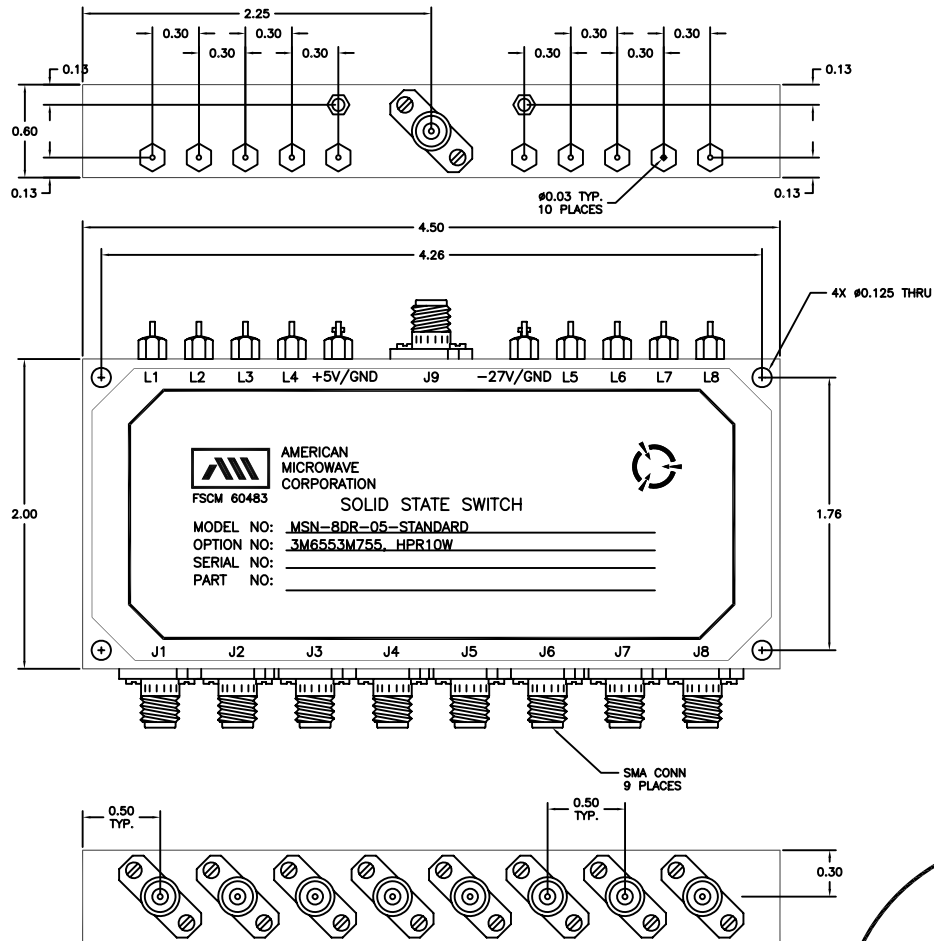
7311-G GROVE ROAD
 FREDERICK, MARYLAND 21704 USA
 TEL: 301-662-4700 FAX: 301-662-4938
 WEBSITE: www.americanmicrowavecorp.com
 E-MAIL: sales@americanmicrowavecorp.com
 ISO 9001:2000 CERTIFIED



APPROVALS		DATE	TITLE			REV.
DRAWN <i>WLP</i>		05/03/07	PRODUCT FEATURE MSN-8DR-05-STANDARD			A
CHECKED			OPTIONS: 3M6553M755, HPR10W SP8T PIN DIODE SWITCH			
ISSUED			SIZE A	FSCM NO. 60483	DWG NO. 100-M003-001	
			SCALE N:S	SHEET 1 OF 2		

DESCRIPTION

AMC MODEL MSN-8DR-05-STANDARD OPTION 3M6553M755, HPR10W IS A REFLECTIVE SP8T PIN DIODE SWITCH DESIGNED TO MEET THE 3,655 TO 3,775 MHz FREQUENCY RANGE WITH A 10 WATT POWER HANDLING.



MECHANICAL OUTLINE

ALL DIMENSIONS ARE IN INCHES
TOLERANCES:
X.XX ±0.020
X.XXX ±0.010

AMERICAN MICROWAVE CORPORATION

7311-G GROVE ROAD
FREDERICK, MARYLAND 21704 USA
TEL: 301-662-4700 FAX: 301-662-4938
WEBSITE: www.americanmicrowavecorp.com
E-MAIL: sales@americanmicrowavecorp.com
ISO 9001:2000 CERTIFIED



APPROVALS		DATE	TITLE			
DRAWN		05/09/07	MECHANICAL OUTLINE MSN-8DR-05-STANDARD OPTIONS: 3M6553M755, HPR10W SP8T PIN DIODE SWITCH			
CHECKED			SIZE	FSCM NO.	DWG NO.	REV.
			A	60483	100-M003-001	A
ISSUED			SCALE	N:S		SHEET 2 OF 2